

High Pressure Plunger Pump - KH

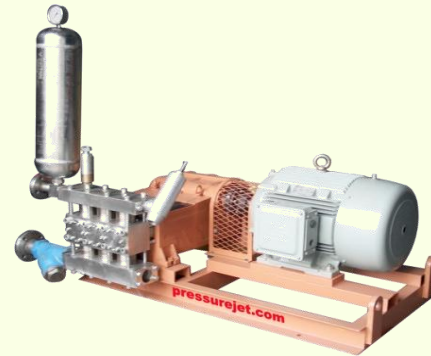


Material of Construction

- **Pump Head:** - Forged Stainless Steel SS 316/SS 304/SS 410/Duplex SS
- **Plunger :** - Ceramic coating/Tungsten Carbide coating /Hard Chrome
- **Valve & Valve Seat:** - Stainless Steel
- **Plunger Seal:** - PTFE Aramide
- **Crank Shaft:** - Forged, nitride Hardened & Ground
- **Pump Body:** - FG 260

Major Applications

- **Hydro Test**
- **Transfer**
- **Injection**
- **Reverse Osmosis**
- **Process**
- **Descaling**
- **Spraying & many more...**



Technical Data Chart

PARAMETER	DESCRIPTION
Capacity Range	Min. Flow rate 173 LPM (45.70 GPM) @ max. Pressure 520 Kg/cm ² (7396.14 PSI) Max. Flow rate 548 LPM (144.77 GPM) @ max. Pressure 170 Kg/cm ² (2417.97 PSI)
Pump Speed Range	570 SPM
Motor HP	Up to 240 HP @ 1800 RPM
Transmission	Direct Couple (Internal Gearbox)

Complete System Includes Following Accessories: Bare Pump, Electric Motor/Diesel Engine, Coupling, Pressure Regulating Valve, Safety Valve, Pulsation Dampner, Strainer, Pressure Gauge etc. Other accessories like Trolley, Starter, Cable, Control panel etc. can also be supplied as per specific requirements of client.

PressureJet Systems Pvt. Ltd.

(An ISO 9001-2008 CERTIFIED COMPANY)

62/13, Phase-1, G.I.D.C. Vatva, Ahmedabad – 382445. Gujarat, India

Phone: + 91 – 79 – 25830762 / 25893868 / 32455727, Fax: +91-79-25897220

E-Mail: sales@pressurejet.com • URL: www.pressurejet.com