

## High Pressure Plunger Pump - KG

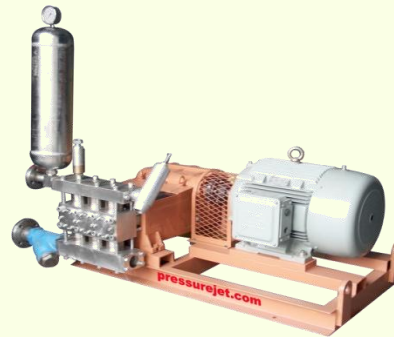


### Material of Construction

- **Liquid End:** - Forged SS 316/SS 316L/Duplex SS
- **Plunger :** - Ceramic coating/Tungsten Carbide coating /Hard Chrome
- **Valve & Valve Seat:** - Stainless Steel
- **Plunger Seal:** - PTFE Aramide
- **Crank Shaft:** - Forged, EN24, Nitride Hardened & Ground
- **Pump Body:** - Cast Iron FG 260 casting
- **Gear Box:** - Helical Internal Gear Box

### Major Applications

- **Hydro Test**
- **Transfer**
- **Injection**
- **Reverse Osmosis**
- **Process**
- **Spraying & many more...**



### Technical Data Chart

PARAMETER	DESCRIPTION
<b>Capacity Range</b>	Min. Flow rate 185 LPM (48.87 GPM) @ max. Pressure 190 Kg/cm <sup>2</sup> (2702.44 PSI) Max. Flow rate 625 LPM (165.11 GPM) @ max. Pressure 70 Kg/cm <sup>2</sup> (995.63 PSI)
<b>Pump Speed Range</b>	300 TO 350 SPM
<b>Motor HP</b>	Up to 120 HP @ 1800 RPM
<b>Transmission</b>	Direct Couple (Internal Gearbox)

**Complete System Includes Following Accessories:** Bare Pump, Electric Motor/Diesel Engine, Coupling, Pressure Regulating Valve, Safety Valve, Pulsation Dampner, Strainer, Pressure Gauge etc. Other accessories like Trolley, Starter, Cable, Control panel etc. can also be supplied as per specific requirements of client.

## PressureJet Systems Pvt. Ltd.

(An ISO 9001-2008 CERTIFIED COMPANY)

62/13, Phase-1, G.I.D.C. Vatva, Ahmedabad – 382445. Gujarat, India

Phone: + 91 – 79 – 25830762 / 25893868 / 32455727, Fax: +91-79-25897220

E-Mail: [sales@pressurejet.com](mailto:sales@pressurejet.com) • URL: [www.pressurejet.com](http://www.pressurejet.com)